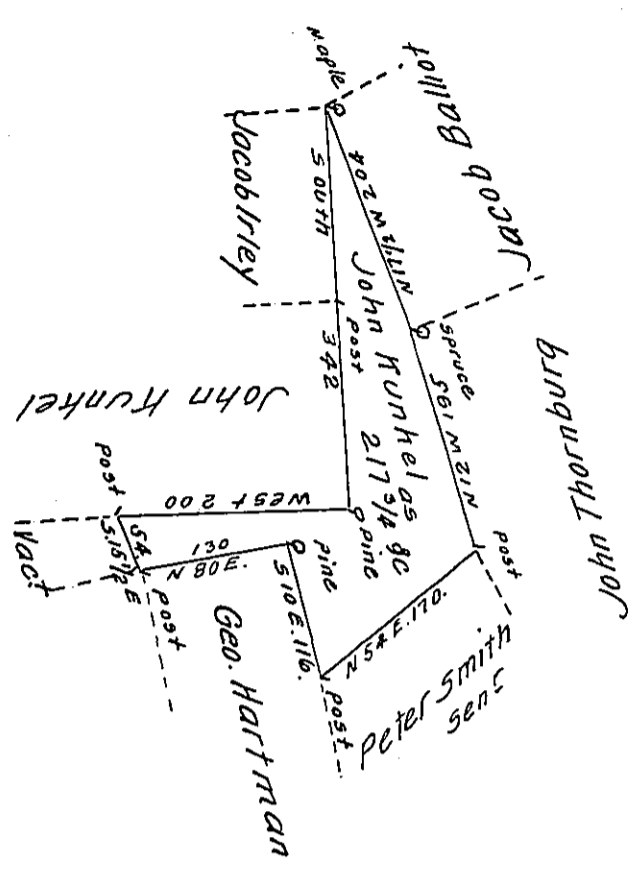


Hazle Twp  
Luzerne



A Draft of a tract of land Called the Last - Situate Joining  
 Land of Jacob Irely & others in the County of Northum<sup>d</sup> Con-  
 taining two Hundred & Seventeen Acres <sup>3/4</sup> & allow<sup>e</sup>. Surveyed  
 for John Hun<sup>c</sup>kel the 11<sup>th</sup> day of March 1794 by Virtue of a War-  
 rant dated the 30<sup>th</sup> Day of Dec<sup>r</sup> 1793.

To Daniel Brodhead Esq<sup>r</sup> } by W<sup>m</sup> Gray D. S.  
 Surv<sup>r</sup> Gen<sup>l</sup> }

IN TESTIMONY that the above is a copy of the original remaining on file in  
 the Department of Internal Affairs of Pennsylvania, made  
 conformably to an Act of Assembly approved the 16th day of  
 February, 1833, I have hereunto set my Hand and caused  
 the Seal of said Department to be affixed at Harrisburg,  
 this thirty first day of January 1911.

*Henry Houser*

Secretary of Internal Affairs.